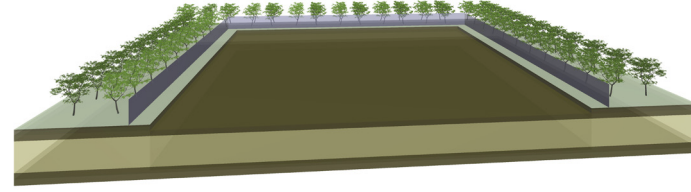
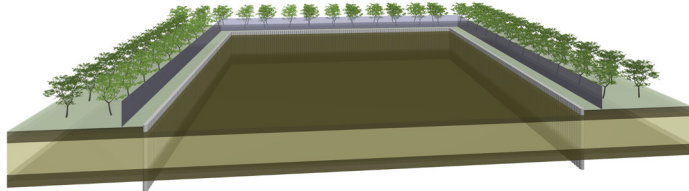


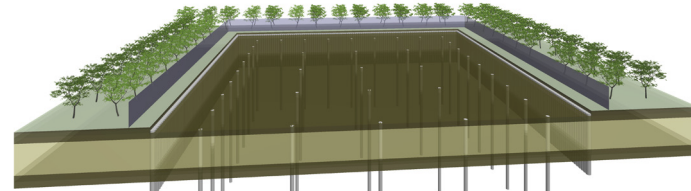
① Establish nursery and temporary site hoarding at perimeter of local works. Temporary nursery to become a screen for hoarding/ temporary site works.



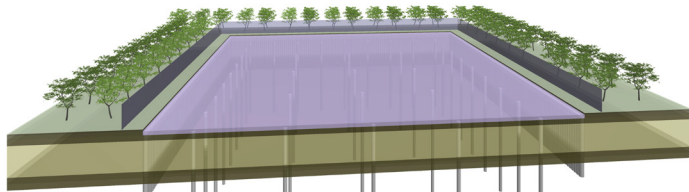
② Scrape and retain topsoil to reveal gravel topping to land.



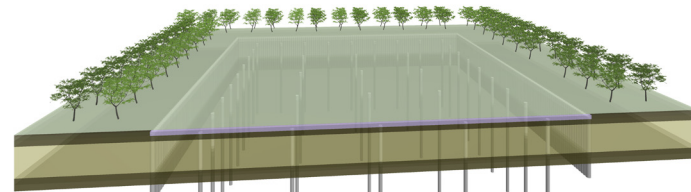
③ Perimeter or sheet piling locally to create basement 'cell' within water table.



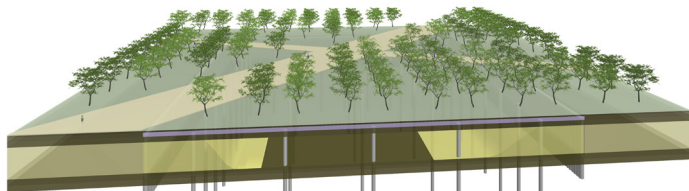
④ Drilling of intermediate core piles.



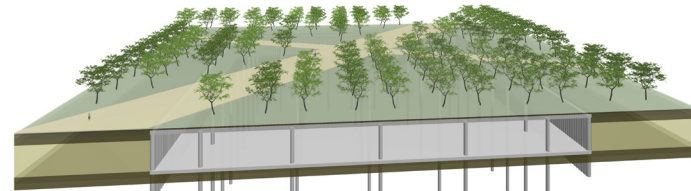
⑤ Cast ground slab, remove site hoarding and temporary nursery.



⑥ Re-instate top-soil for new park.



⑦ Extraction of gravel below ground in safe and self contained environment. Establish new public park.



⑧ Complete post excavation space.