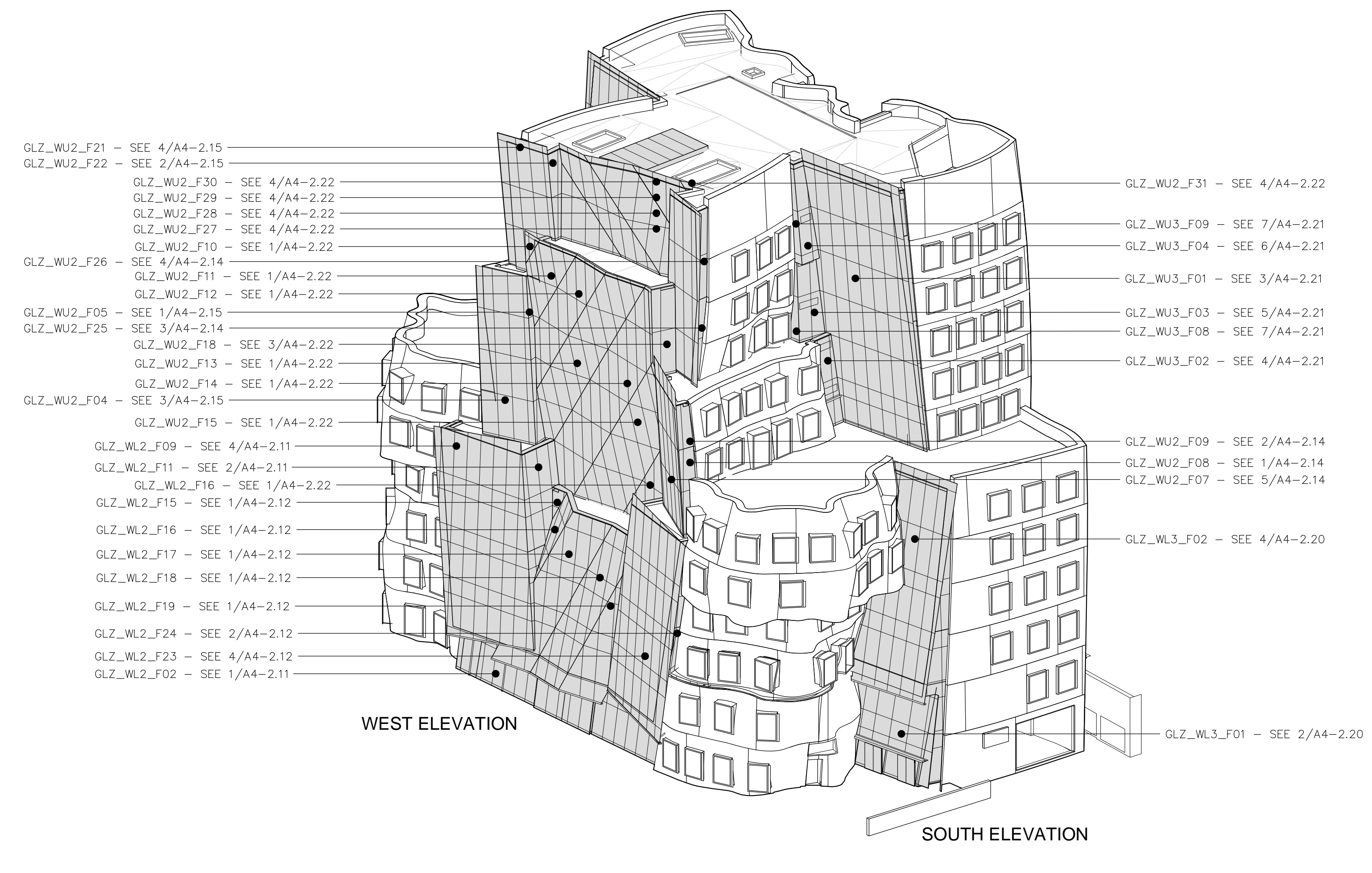


5 NW ISOMETRIC EXTERIOR WALL FACE DESIGNATIONS
 NTS



3 SW ISOMETRIC EXTERIOR WALL FACE DESIGNATIONS
 NTS

GENERAL NOTES

- ALL HORIZONTAL GLAZING TO BE DESIGNED TO ALLOW PERIODIC MAINTENANCE LOADS AND MAN LOADS
- THE LAMINATED LAYER OF THE INSULATED UNIT TO FACE OCCUPIED FLOOR UNLESS SLOPED OUTWARD MORE THAN 15 DEGREES SEE NOTE 4
- ALL SKYLIGHT GLAZING TO HAVE CERAMIC FRIT. 75%
- ALL GLAZING INCLINED MORE THAN 15 DEGREES MUST HAVE LAMINATION ON OUTWARD LEANING GLASS.

LEGEND

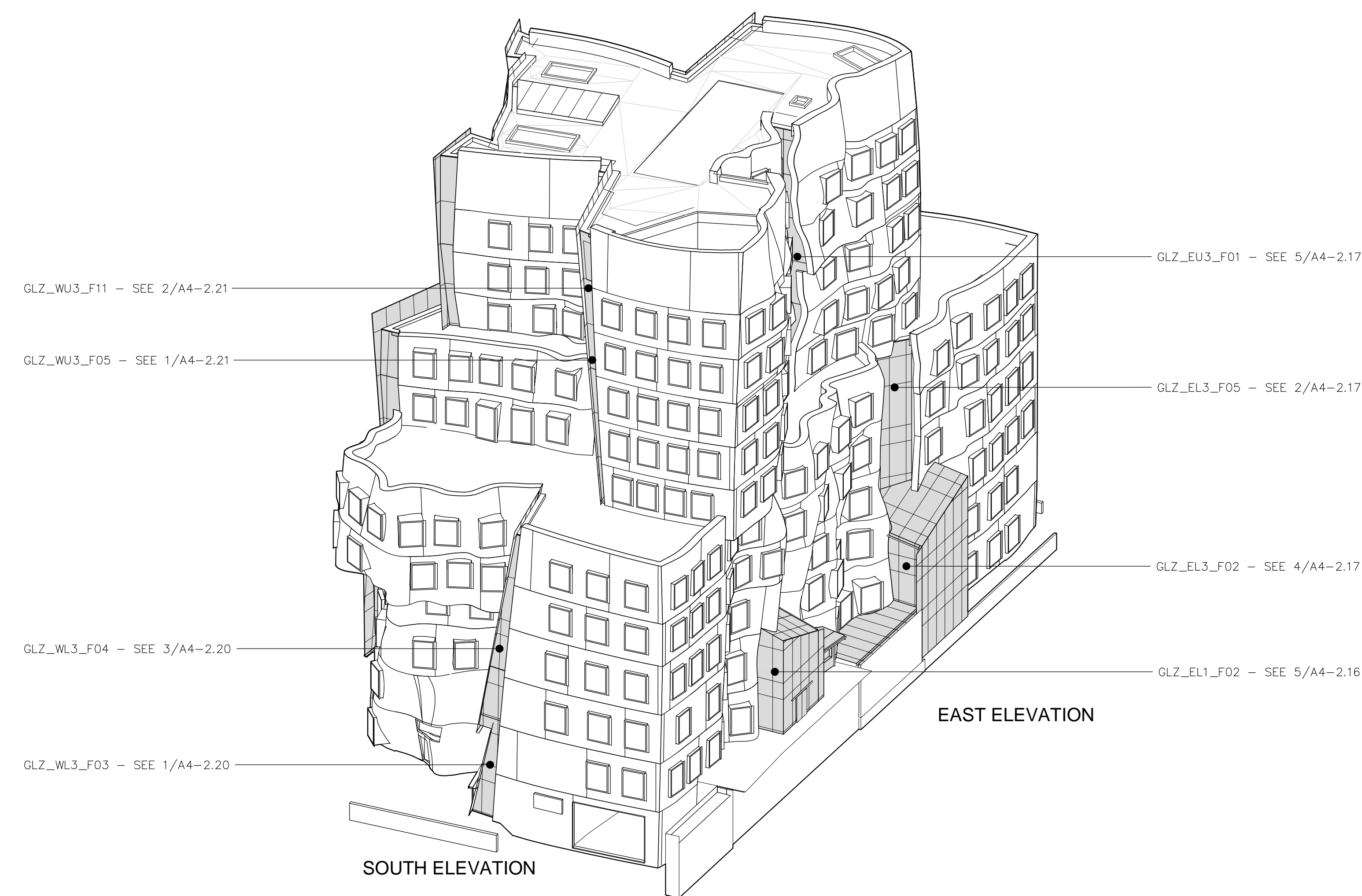
GLZ_WU1_F02_C

MATERIAL
 GLZ = GLAZED
 BRK = BRICK

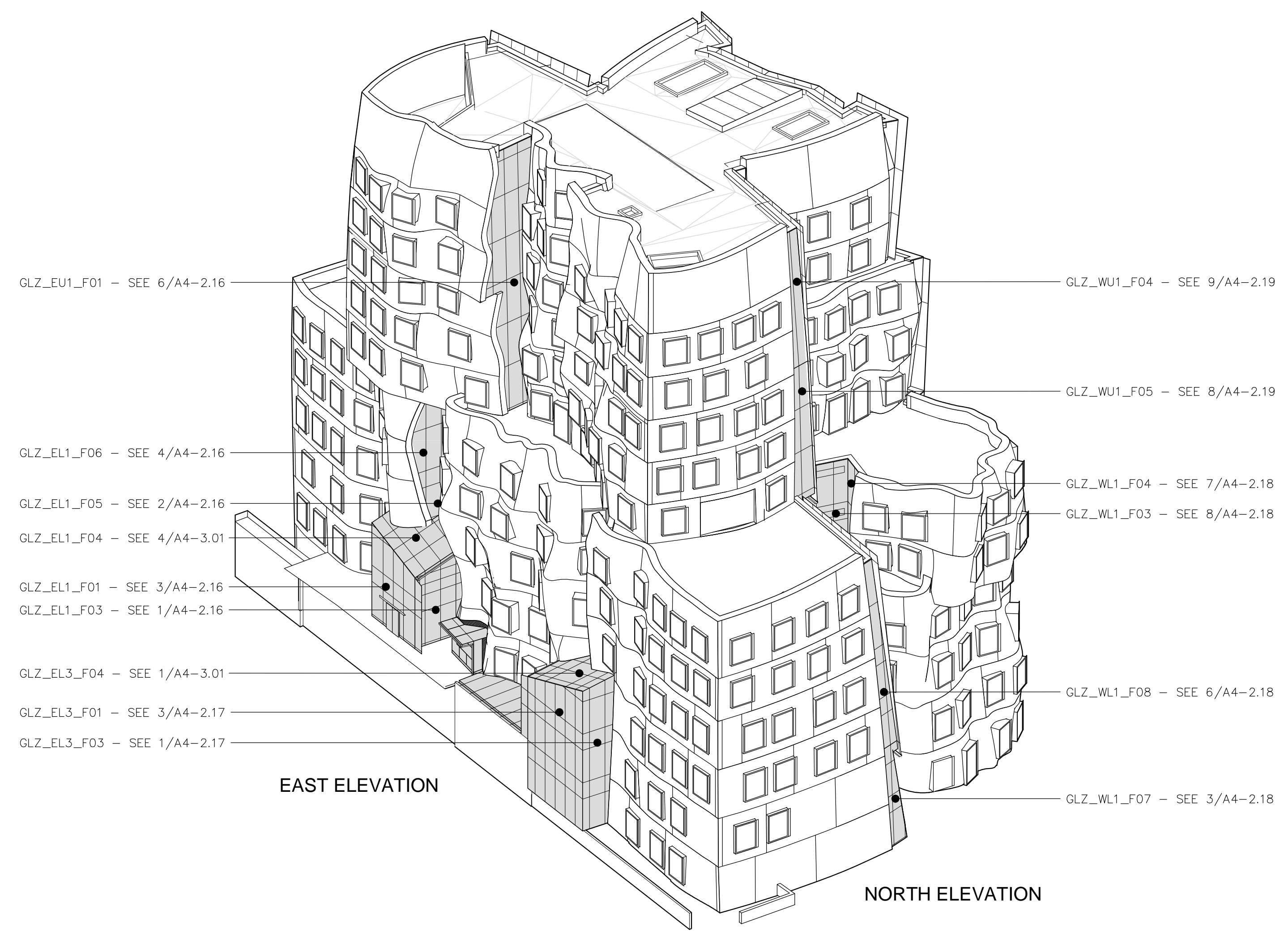
LOCATION
 W = WEST
 E = EAST

LOCATION
 U = UPPER
 L = LOWER

FACE NUMBER
 C = CURVED
 F = FLAT



4 SE ISOMETRIC EXTERIOR WALL FACE DESIGNATIONS
 NTS



2 NE ISOMETRIC EXTERIOR WALL FACE DESIGNATIONS
 NTS

LEGEND

GLZ_WU1_F02

MATERIAL
 GLZ = GLAZED
 BRK = BRICK

LOCATION
 W = WEST
 E = EAST

LOCATION
 U = UPPER
 L = LOWER

FACE NUMBER

EXTERIOR WALL SYSTEMS GLAZED WALL ELEMENTS TYPES & FACES