

Key Requirements and figures

1 bed	21 no
2 bed	10 no
3 bed	13 no

TOTAL UNITS: 44 units

Site area: 1556sqm

Wheelchair accessible -

10%

4 no.

Dual aspect dwellings -

59%

Parking requirements:

0.4 - 18

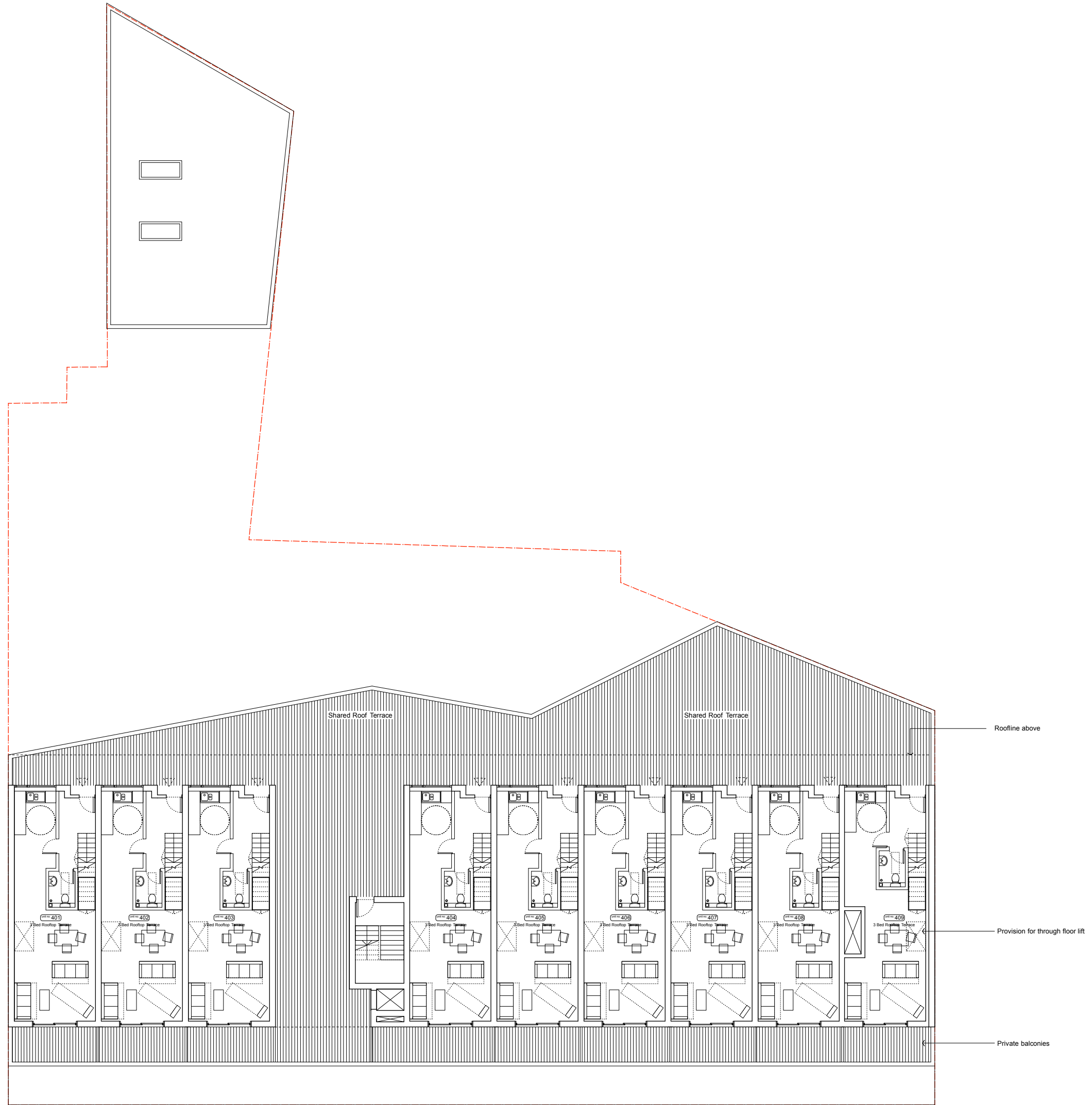
Inclusive of Wheelchair spaces: 4no

PTAL - estimation: 6a

Community use space

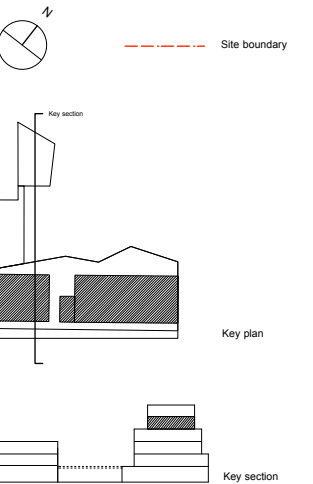
Ground floor community

space 220sqm



CORE A

KEY



East
Architecture landscape
urban design

Unit 8
4th Floor
49-59 Old street
EC1V 9HX
T: 020 74903190
mail@east.uk.com

PROJECT:
213-217 Barking Road, E16 4HH

STATUS: Planning DATE: November 2013

SCALE: 1:100 SIZE: A1

DRAWING TITLE: DRAWING NO. REV
Proposed BR_154 A
FOURTH FLOOR plan

Revisions
A 25.12.13 Amendments to drawing and annotations
The information in this drawing is copyright of East
All rights reserved. No part of this drawing
All dimensions are to be verified on site prior to construction.
East to be informed of any variation between site conditions
and drawings.