

Key Requirements and figures

1 bed	21 no
2 bed	10 no
3 bed	13 no

TOTAL UNITS: 44 units

Site area: 1556sqm

Wheelchair accessible - 10%
4 no.

Dual aspect dwellings - 59%

Parking requirements:
0.4 - 18
Inclusive of Wheelchair spaces: 4no
PTAL - estimation: 6a

Community use space
Ground floor community space 220sqm

Green roof

Rooflight

Rooflight

Mid-grey aluminium window frames

Mid-grey aluminium doors to balcony

Mid-grey steel balustrade at edge of balcony

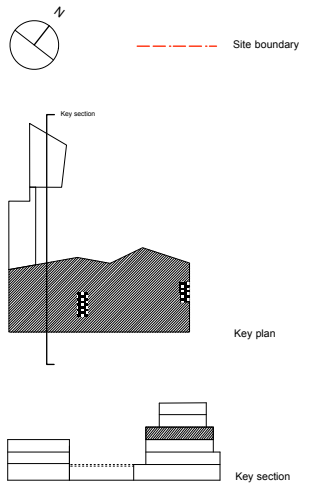
Mid-grey fixed aluminium window frames on flank wall fitted with translucent glass

CORE B

CORE A

Loggia balconies

KEY



East
Architecture landscape
urban design

Unit 8
4th Floor
49-59 Old street
EC1V 9HX
T: 020 74903190
mail@east.uk.com

PROJECT:
213-217 Barking Road, E16 4HH

STATUS: Planning DATE: November 2013

SCALE: 1:100 SIZE: A1

DRAWING TITLE: Proposed **THIRD FLOOR** plan DRAWING NO. REV BR_153 A

Revisions
A. 25.12.13 Amendments to drawing and annotations
The information in this drawing is copyright of East
All drawings are to be verified on site prior to construction.
East to be informed of any variation between site conditions
and drawings.