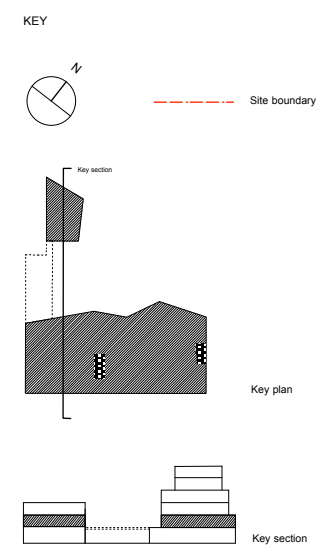


Key Requirements and figures

1 bed	21 no
2 bed	10 no
3 bed	13 no
TOTAL UNITS: 44 units	
Site area: 1556sqm	
Wheelchair accessible - 10%	
4 no.	
Dual aspect dwellings - 59%	
Parking requirements:	
0.4 - 18	
Inclusive of Wheelchair spaces: 4no	
PTAL - estimation: 6a	
Community use space	
Ground floor community space 220sqm	



East
Architecture landscape
urban design

Unit 8
4th Floor
49-59 Old street
EC1V 9HX
T: 020 74903190
mail@east.uk.com

PROJECT:
213-217 Barking Road, E16 4HH

STATUS: Planning DATE: November 2013

SCALE: 1:100 SIZE: A1

DRAWING TITLE: DRAWING NO. REV
Proposed FIRST FLOOR plan BR_151 A

Revisions
A. 25.12.11 Amendments to drawing and annotations
The information in this drawing is copyright of East
All drawings are to be verified on site prior to construction.
East to be informed of any variation between site conditions
and drawings.

- Mid-grey aluminium window frames
- Mid-grey aluminium doors to balcony
- Mid-grey steel balustrade at edge of balcony
- Mid-grey fixed aluminium window frames on flank wall fitted with translucent glass
- Opening within flank wall
- Covered balconies
- Opening within flank wall
- Mid-grey steel balustrade to edge of balcony

CORE A

CORE B

Gatehouse Maisonette (G1)

Gatehouse Maisonette (G2)

First floor terrace

First floor terrace

Unit 100
1 Bed

Unit 102
1 Bed

Unit 103
1 Bed

Unit 104
1 Bed

Unit 108
2 Bed

Unit 109
2 Bed

Unit 107
1 Bed

Unit 106
3 Bed

Unit 105
1 Bed

Unit 110
1 Bed

Unit 112
2 Bed