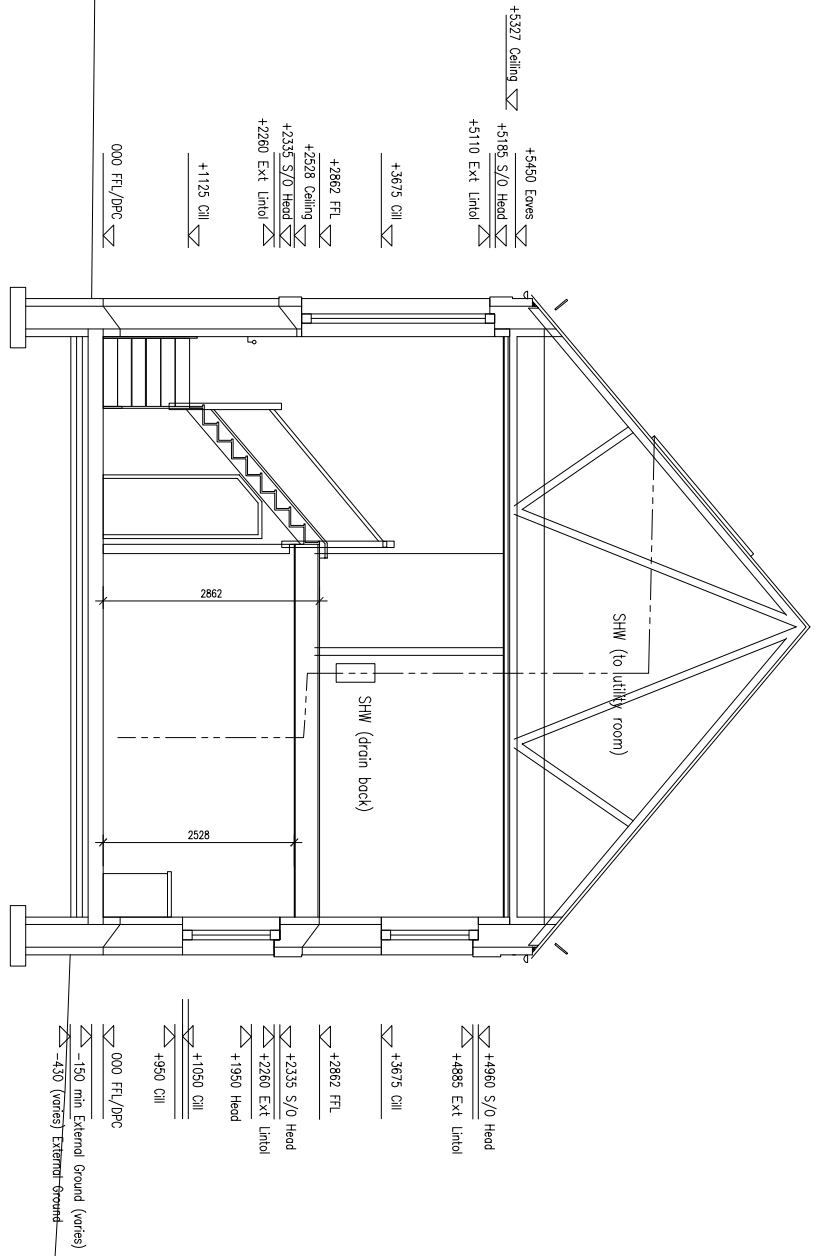


Section A-A



Section B-B

- 1 Longitudinal bracing at node points.
- 2 Diagonal bracing to rafters.
- 3 Diagonal bracing to ceiling joists
- 4 Chevron bracing to struts
- 100 x 25mm SC3 grade timber bracing through out

- ▽ +4960 Eaves
- ▽ +5195 S/O Head
- ▽ +5110 Ext Lintel
- ▽ +3675 Cill
- ▽ +2862 FFL
- ▽ +2528 Ceiling
- ▽ +2335 S/O Head
- ▽ +2260 Ext Lintel
- ▽ +1950 Head
- ▽ +1125 Cill
- ▽ 000 FFL/DPC
- ▽ -150 min External Ground (varies)

- ▽ +4960 Eaves
- ▽ +5195 S/O Head
- ▽ +5110 Ext Lintel
- ▽ +3675 Cill
- ▽ +2862 FFL
- ▽ +2528 Ceiling
- ▽ +2335 S/O Head
- ▽ +2260 Ext Lintel
- ▽ +1950 Head
- ▽ +1125 Cill
- ▽ 000 FFL/DPC

- ▽ +1960 S/O Head
- ▽ +4885 Ext Lintel
- ▽ +3675 Cill
- ▽ +2862 FFL
- ▽ +2335 S/O Head
- ▽ +2260 Ext Lintel
- ▽ +1950 Head
- ▽ +1050 Cill
- ▽ +950 Cill
- ▽ 000 FFL/DPC
- ▽ -150 min External Ground (varies)
- ▽ -430 (varies) External Ground

© COPYRIGHT: ALL RIGHTS RESERVED. THIS DRAWING MUST NOT BE REPRODUCED WITHOUT PERMISSION.
DO NOT SCALE. THE CONTRACTOR IS RESPONSIBLE FOR CHECKING DIMENSIONS WHICH ARE IN MILLIMETRES UNLESS OTHERWISE STATED.

CONSTRUCTION

Client		Trevor and Judith Gospel	
Project		Steel Farm, Whitfield, Hexham, NE47 8JP	
Drawing		Section A-A / B-B	
Size	Scale	Date	Project No
A3	1:100	20	100
			DMG No
			20
			109
		Revision	
		-	-