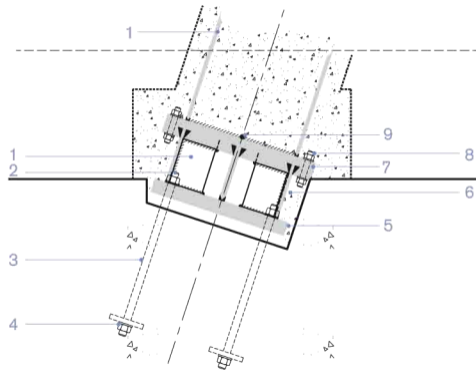
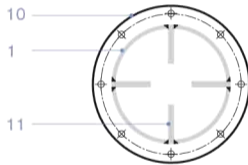


Raked column on south-west facade, base detail



Raked column, plan detail



1. 508mm-diameter steel tube
2. Four m32/8.8s HD bolts
3. 75mm-diameter mild steel cone
4. 150 x 150 x 20mm PLT washers
5. 600 x 600 x 60mm-thick steel base plate

6. 508mm diameter x 16mm-thick steel column
7. 670mm diameter x 40mm-thick PLT
8. Twin pipe flanges to be bolted together using eight m24/8.8s bolts
9. 12mm-diameter

10. 670mm-diameter x 40mm-thick PLT with holes for m24/8.8s bolts

11. Four 150mm-long x 20mm-thick stiffeners

0 200mm